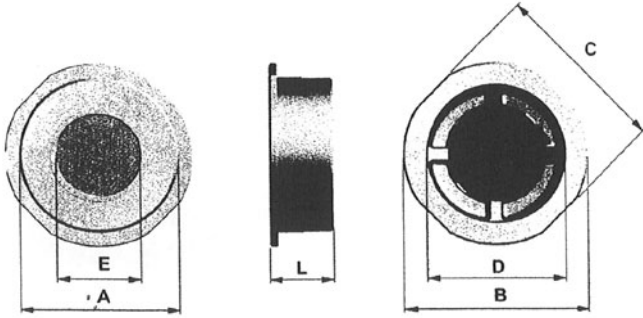


Bronze Body Wafer Spring Check Valve

Stainless Steel 316 Disc & Spring

To fit PN6/16 Flanges ½" to 3",
4" PN10/16



Pressure/ Temperature Ratings

Max Pressure	PN16
Temperature	0°C to 250°C

Material List

Body	Bronze B-584
Metal Seat Disc	A240 (AISI 316 L)
Soft Seat Disc (on request)	A240 (AISI 316 L) + NBR A240 (AISI 316 L) + EP DM A240 (AISI 316 L) + FKM
Upper Stop Spring	A240 (AISI 316 L)
Spring	AISI 316

Dimensions

DN	A	B	C	D	E	L	Kg
15	37	49	44	32	15	16	0.11
20	45	60	54	39	20	19	0.14
25	55	70	64	46	24	22	0.26
32	65	80	76	57	31	28	0.36
40	74	90	86	65	38	32	0.46
50	89	107	96	80	47	40	0.90
65	107	127	116	97	62	46	1.60
80	126	140	132	113	77	50	2.10
100	147	162	154	127	95	60	2.80